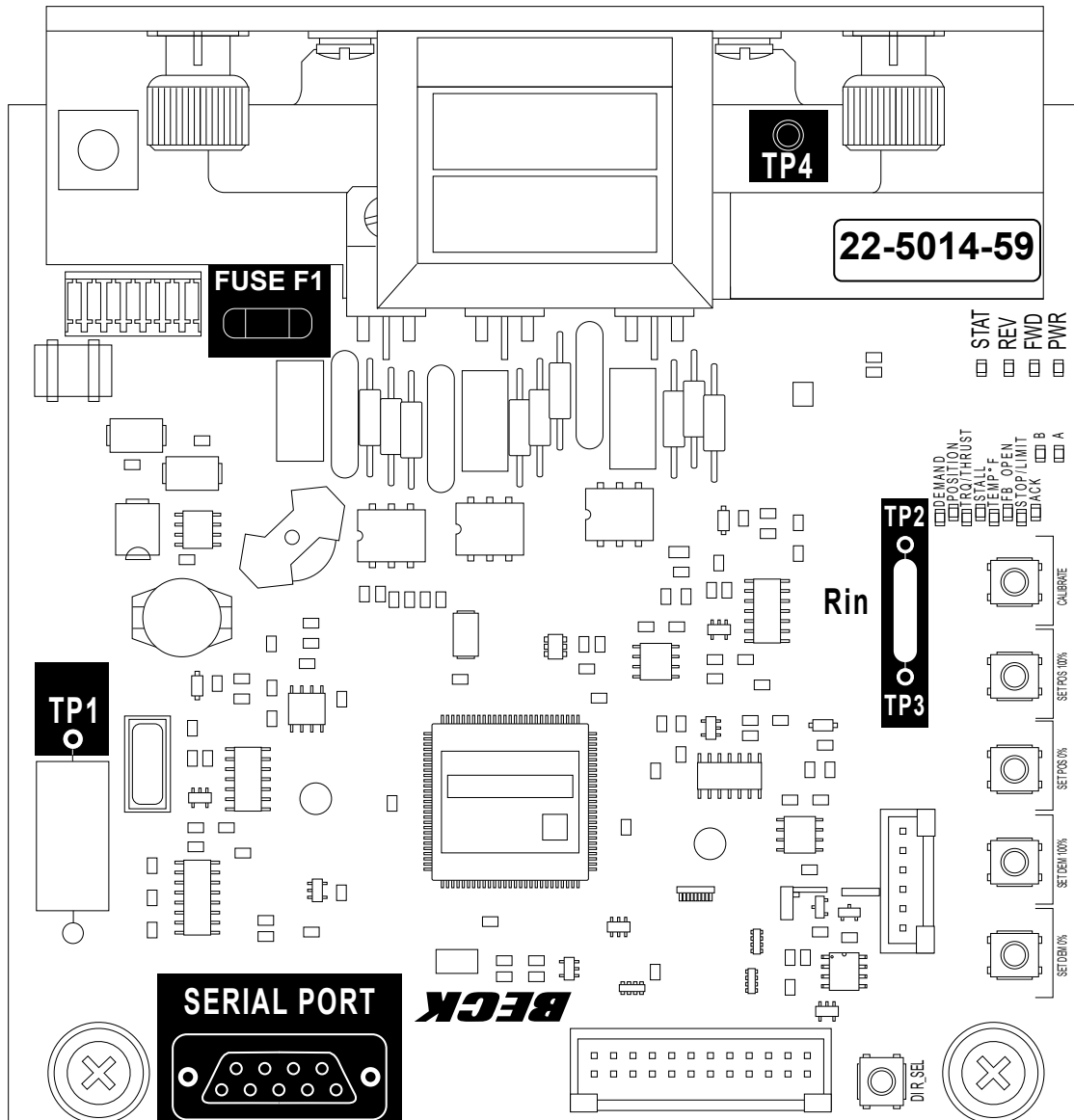




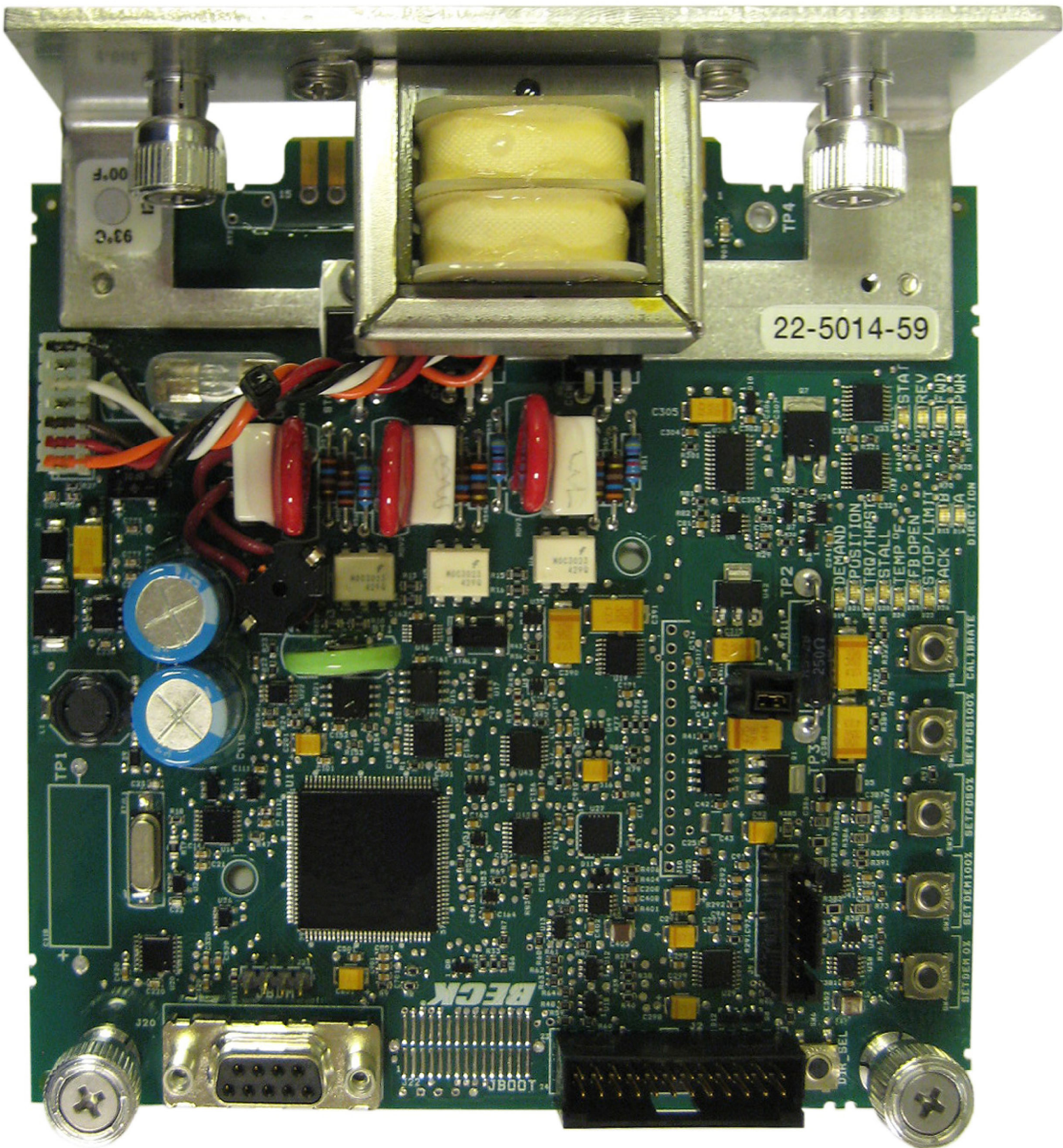
## DCM-3 TEST POINTS



The DCM-3 provides voltage test points allowing the verification of the demand signal and position signal at the DCM-3 board.

	Test Points	Voltage
Demand Signal	TP2 (+) and TP3 (-)	1 - 5 Volts DC
Position Signal	TP4 (+) and TP1 (-)	1 - 5 Volts DC

The Fuse F1 (Beck part number 11-1372-26) is a 7 Amp very fast acting 125 Volts AC fuse installed in a fuse holder.



22-5014-59

BECK

93°C  
J.00

DEMAND  
POSITION  
TRQ/THPST  
STALL  
TEMP OF  
STOP/LIMIT  
BACK  
DIRECTION  
CALIBRATE  
SETPOINT  
SETPOINT  
SETPOINT

TP1

TP2

TP4

1000V

DIR BEL