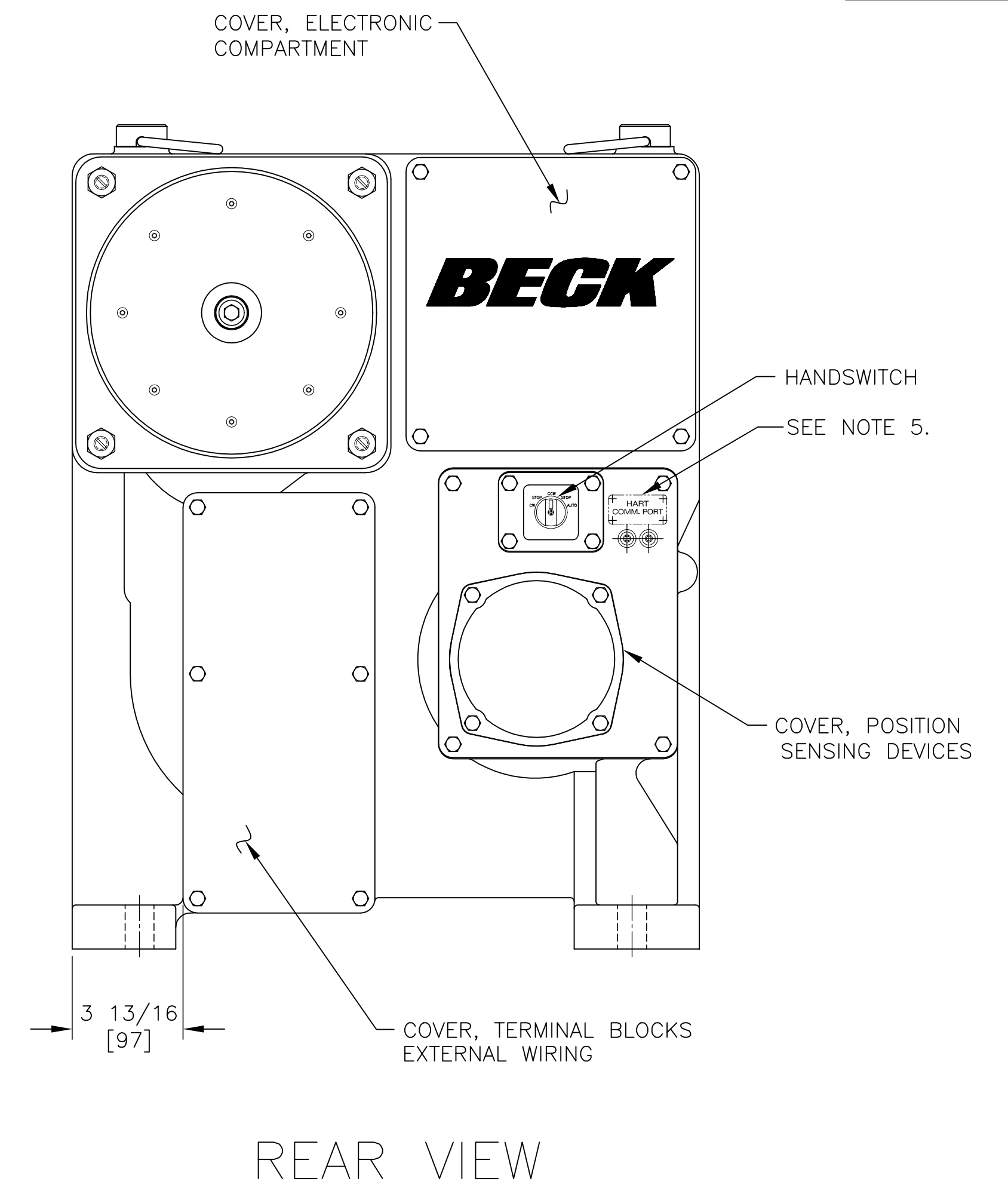
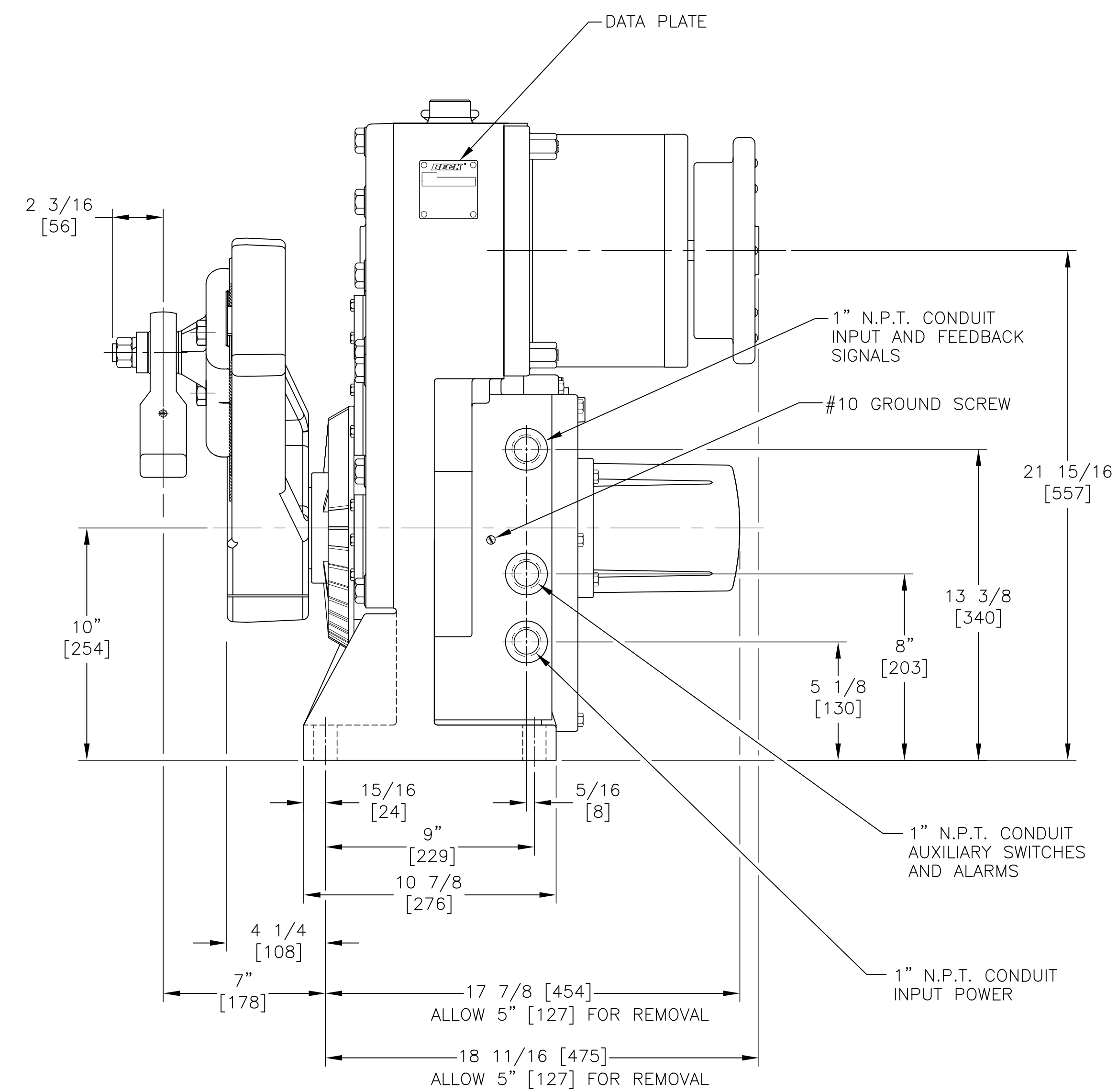
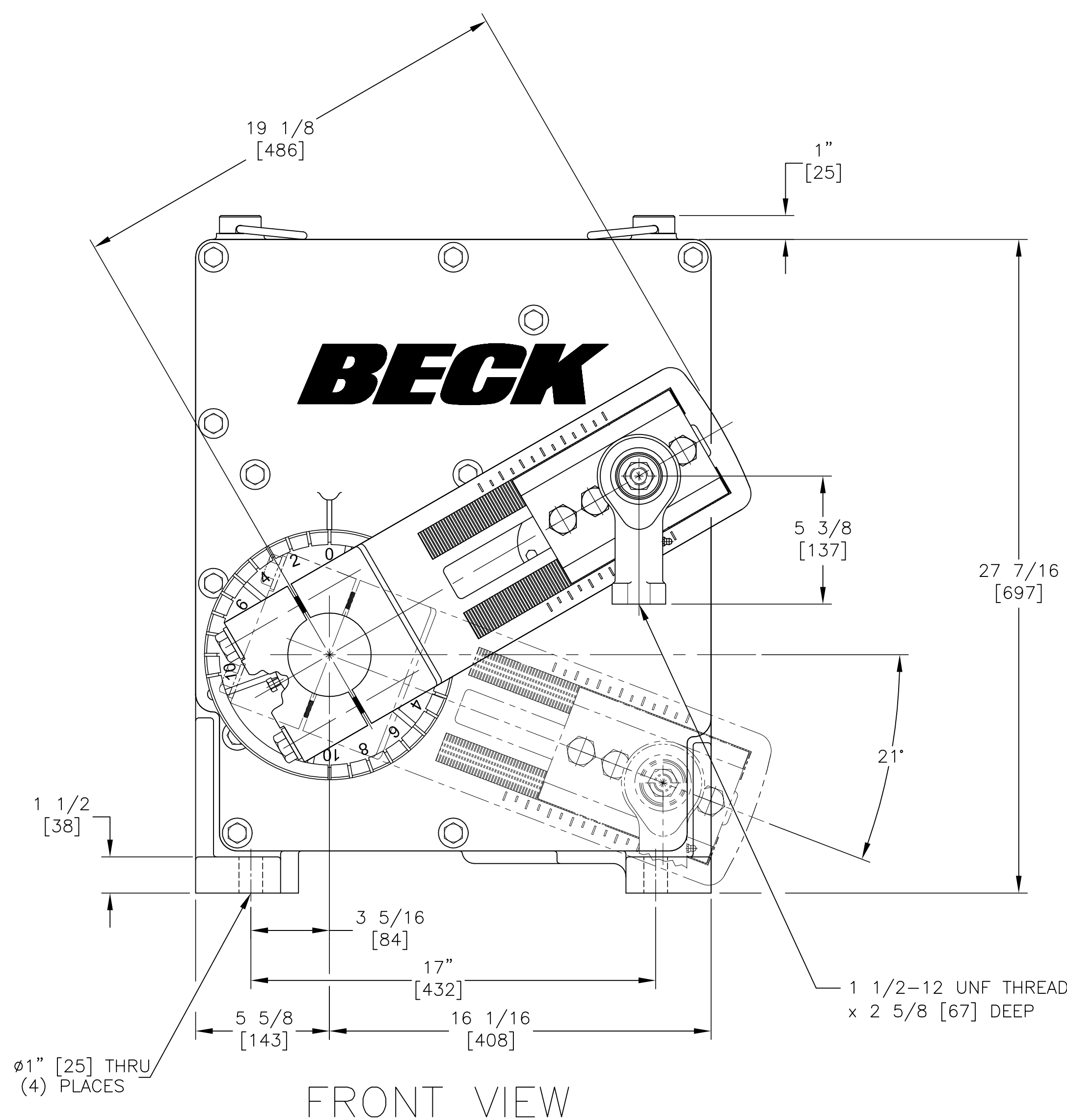


THIS DOCUMENT IS A COPY AND IS NOT THE SOURCE DOCUMENT. INFORMATION IS SUBJECT TO CHANGE WITHOUT NOTICE. THE INFORMATION CONTAINED HEREIN IS COPYRIGHTED BY HAROLD BECK AND SONS, INC. CHANGES TO THE DOCUMENT ARE PROHIBITED. CONTACT A BECK SALES ENGINEER IF A CERTIFIED DRAWING IS REQUIRED.



ALL DIMENSIONS ARE IN INCHES AND [MM] UNLESS OTHERWISE SPECIFIED.  
 THREADS AND TAPPED HOLES ARE SPECIFIED AS UNIFIED THREAD SIZES ONLY.  
 CONDUIT PIPE THREADS PER AMERICAN NATIONAL STANDARD TAPER PIPE THREADS (N.P.T.)

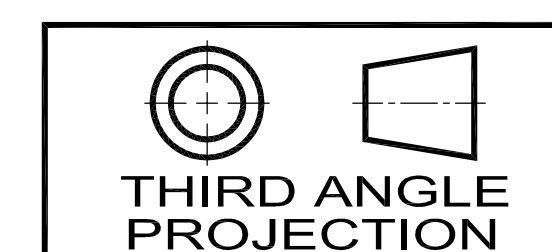
- NOTES:**
1. ALL DIMENSIONS ARE TYPICAL.
  2. TOLERANCES: ±1/4 [±6]
  3. MOUNTING DIMENSIONS: ±1/16 [±2]
  4. IF SPECIFIC DIMENSIONS ARE REQUIRED, PLEASE CONTACT A FACTORY REPRESENTATIVE.
  5. REFERENCE LOCATION FOR HART COMMUNICATION PORT LABEL WHEN HART COMMUNICATION DRIVE OPTION IS SPECIFIED.

**RECOMMENDED TORQUES**

	THREAD SIZE	TORQUE LB-FT	TORQUE Nm
CRANK ARM SCREWS (4)	3/4-16	300	407
CRANK PIN SCREWS (3)	3/4-16	300	407
ROD END NUT	3/4-16	200	271
MOTOR MOUNTING NUTS (4)	1/2-13	37	50
ELECTRONICS COMPARTMENT COVER	5/16-18	10	14
TERMINAL COMPARTMENT COVERS	5/16-18	10	14
CONTROL END COVER	5/16-18	10	14

BECK CONTROL DRIVE MODEL NO.	TORQUE LB-FT [N-m]	TIMING SEC/100°	NET WT. LBS. [KGS.]	OUTPUT SHAFT DIA.	CRANKARM RADIUS (ADJUSTABLE)	MAXIMUM OVERHUNG LOAD LBS. [KGS.]
22-3□□	3000 [4067]	30	515 [234]	3 1/2 [89]	9"-15" [229-381]	15000 [6804]

18-2230-01o



**HAROLD BECK & SONS INC**  
 NEWTOWN INDUSTRIAL COMMONS NEWTOWN, PENNSYLVANIA 18940 USA

TITLE: **OUTLINE DIMENSIONS BECK 22-300 CONTROL DRIVE**

DRAWN: DMS 11-5-07  
 CHECKED: DWK 11-12-07  
 APPROVED: JHM 11-12-07

SCALE: NONE

DRAWING NO: **18-2230-01o**

REV: **E**

SHEET NO. 1 OF 1

SIZE: **D**